

THNF-C

Digital thermocouple connector conditioner

CAN output

Range From -100 to +1800 °C
Type B, E, J, K, N, R, S, T
Sampling frequency 1 KHz
Sampling error 0.2 %FS max
Cold error junction ± 0.25 °C

CAN Bus 2.0A
Data format 2 bytes (signed int)
Resolution 0.1°/bit
Accuracy ± 0.5 °C

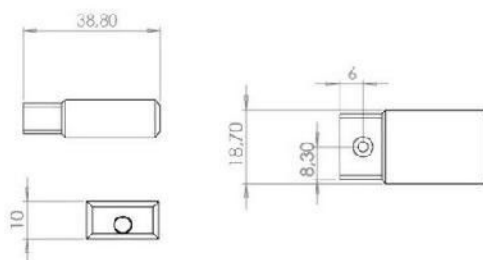
Supply voltage 6 to 25V
Supply current <25 mA

Dimension 38.8x18.7x10 mm
Material Aluminum
Weight 35 g

Protection IP53
Operating temp -40 to + 125°C
Storage temp -40 to + 125°C

Red Supply
Black GND
Green CAN High
White CAN Low
Yellow Do not connect

1 m cable of 5X26AWG FEP tinned copper braided cable 250V 200°C



Calibration table (Example)			
Target °C	-50 to +200 20mV/°C	-100 to +400 10mV/°C	0 to 1250 4mV/°C
-100		0.00	
-50	0.00	0.50	
0	1.00	1.00	0.00
50	2.00	1.50	0.20
100	3.00	2.00	0.40
150	4.00	2.50	0.60
200	5.00	3.00	0.80
300		4.00	1.20
400		5.00	1.60
600			2.40
800			3.20
1000			4.00
1250			5.00

Ordering ref:

THNF-C-	Type	Range
	K	-20+200
	J	-40+400
	T	0+1800

Ex: THNF-C-K-50+250 → type K, -50 to +250°C