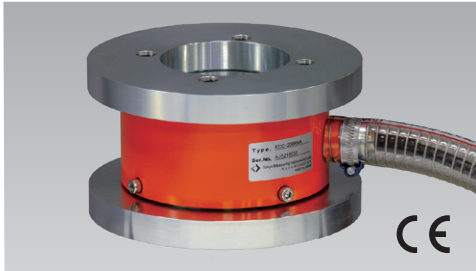


Anchoring strand tension measurement

KCC-NA Center-hole type Compression Load Cell

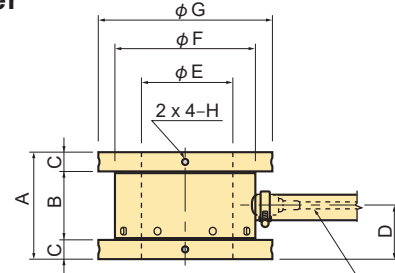
Civil engineering design

Made-to-order

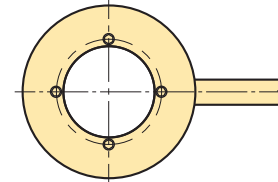


Large center-hole diameter
Flange-mounted

The KCC-NA is a center-hole-type load cell with flanges. The large diameter of its center hole makes this load cell suitable for use in almost all anchoring methods. It can deliver stable measurement performance under a relatively high eccentric load. Protection ratings: IP67 equivalent



Input/Output cable
Protective tube (Outer: ϕ 33mm) 0.3m



SPECIFICATIONS

TYPE	KCC-200KNA	KCC-500KNA	KCC-1MNA
Capacity	200kN	500kN	1MN
Rated Output	1mV/V (2000×10^{-6} strain) $\pm 10\%$		
Non-linearity	1%RO		
Hysteresis	1%RO		
Temperature effect on zero	0.1%RO/ $^{\circ}$ C		
Temperature effect on span	0.05%/ $^{\circ}$ C		
Compensated temperature range	-10 ~ +60 $^{\circ}$ C		
Allowable temperature range	-20 ~ +70 $^{\circ}$ C		
Over load	120%		
Input/Output resistance	350 Ω \pm 1%		
Recommended exciting voltage	10V or less		
Allowable exciting voltage	20V		
Zero balance	5%RO		
Weight	13kg	20kg	32kg

Input/Output cable : ϕ 9mm 0.5mm² 4-core shielded chloroprene cable 5m

DIMENSIONS

TYPE	A	B	C	D	ϕ E	ϕ F	ϕ G	H
KCC-200KNA	108	68	20	54	90	145	190	-
KCC-500KNA	140	90	25	70	120	185	230	M 8 DP20
KCC-1MNA	183	123	30	92	140	220	250	M12 DP20

KCG-200KNA Center-hole type Compression Load Cell 200kN

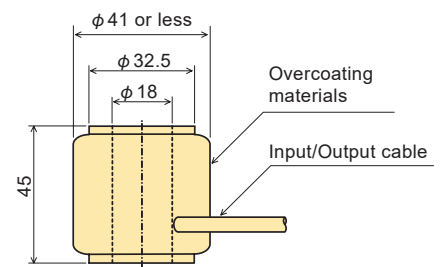
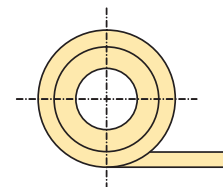
Civil engineering design



Small size
Light weight
Low price

Protection ratings: IP67 equivalent

Small and inexpensive center-hole load cell enabling installation at the strand anchoring part in bridges, etc.



SPECIFICATIONS

TYPE	KCG-200KNA
Capacity	200kN
Rated Output	2.25mV/V (4500×10^{-6} strain) $\pm 10\%$
Non-linearity	0.5%RO
Hysteresis	0.5%RO
Temperature effect on zero	0.1%RO/ $^{\circ}$ C
Temperature effect on span	0.05%/ $^{\circ}$ C
Compensated temperature range	-10 ~ +60 $^{\circ}$ C
Allowable temperature range	-30 ~ +70 $^{\circ}$ C
Over load	120%
Ultimate overload rating	200%
Input/Output resistance	350 Ω
Recommended exciting voltage	10V or less
Allowable exciting voltage	20V
Zero balance	5%RO
Weight	250g

Input/Output cable : ϕ 3mm 0.05mm² 4-core shielded chloroprene cable 2m

