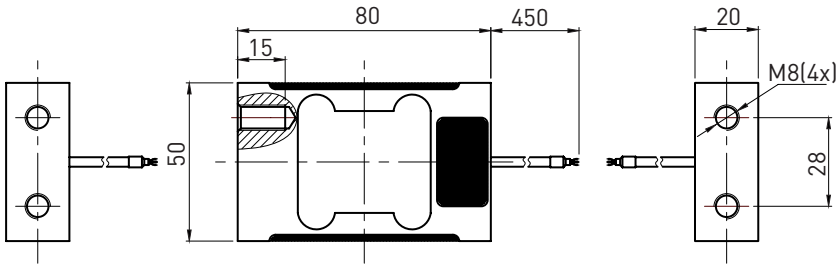


单点式平行梁结构

尺寸及量程 / Size and Capacity



量程 / Capacity	材料 / Material	重量 / Weight
6/10/15/20kg	铝合金/Aluminum alloy	0.3kg



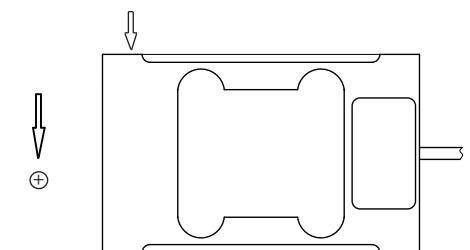
特点和用途 / Features & Applications

- 铝合金材料
- 精度高、抗偏载能力强
- 侧边开孔，容易安装，IP65
- 适用于电子秤，包装秤
- Made of aluminum alloy
- High accuracy, high side load tolerance
- The holes are on the side, easy to install, IP65 protection
- Mainly used for electronic scales, packaging scales

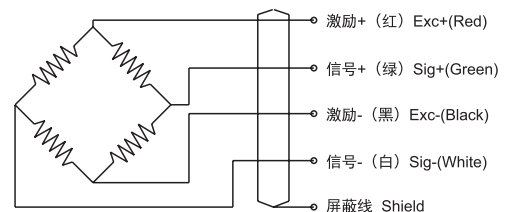
技术参数 / Technical Parameters

参数	Specifications	技术指标 / Technique
输出灵敏度	Rated output	2.0 ± 5% mV / V
零点输出	Zero balance	± 2% F.S.
非线性	Non-linearity	0.02% F.S.
滞后	Hysteresis	0.02% F.S.
重复性	Repeatability	0.02% F.S.
蠕变 (30 分钟)	Creep (30min)	0.017% F.S.
温度灵敏度漂移	Temp. effect on output	0.02% F.S. / 10°C
零点温度漂移	Temp. effect on zero	0.02% F.S. / 10°C
输入电阻	Input impedance	410 ± 10 Ω
输出电阻	Output impedance	350 ± 5 Ω
绝缘电阻	Insulation	≥2000MΩ
激励电压	Recommended excitation	5~10V
最大激励电压	Maximum excitation	15V
温度补偿范围	Compensated temp. range	-10 ~ 40°C
工作温度范围	Operation temp. range	-20 ~ 60°C
安全超载	Safe overload	150% F.S.
极限超载	Ultimate overload	200% F.S.
电缆线尺寸	Cable size	Ø3 × 450 mm
台面尺寸	Platform size	100 × 150 mm
防护等级	Protection class	IP65
连接方式	Cable color code	Input: Red(+) Black(-); Output: Green(+) White(-); 输入: 红 (+) 黑 (-); 输出: 绿 (+) 白 (-);

受力方式 / Load Direction



接线图 / Schematic Wiring Diagram



注：屏蔽线不与弹性体相连。

Note: Cable shield is not connected to element.