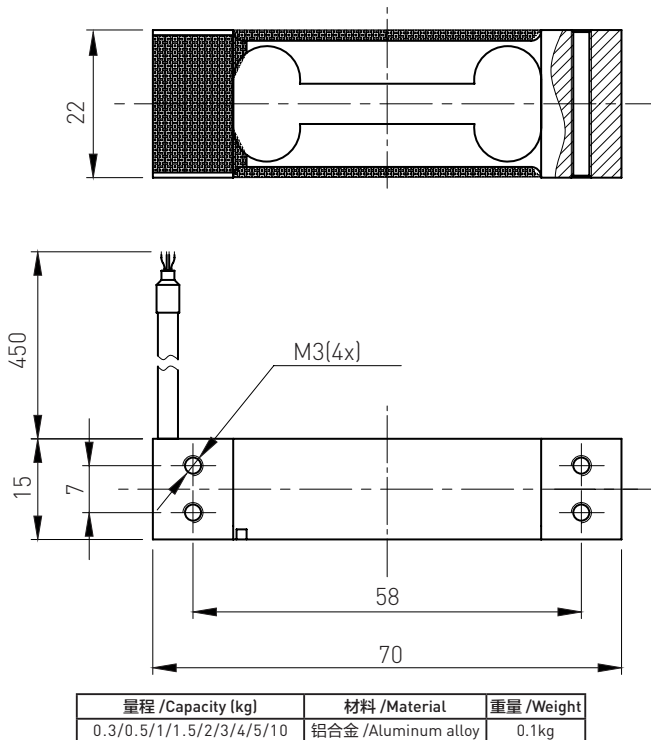


## 尺寸及量程 / Size and Capacity



## 技术参数 / Technical Parameters

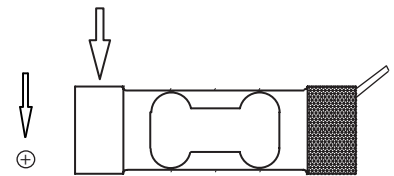
参数	Specifications	技术指标 /Technique
输出灵敏度	Rated output	1.0 ± 10% mV/V (0.3~0.5kg) 2.0 ± 10% mV/V (1~10kg)
零点输出	Zero balance	± 2% F.S.
非线性	Non-linearity	0.02% F.S.
滞后	Hysteresis	0.02% F.S.
重复性	Repeatability	0.02% F.S.
蠕变 (30分钟)	Creep (30min)	0.02% F.S.
温度灵敏度漂移	Temp. effect on output	0.025% F.S. / 10°C
零点温度漂移	Temp. effect on zero	0.025% F.S. / 10°C
输入电阻	Input impedance	410 ± 10 Ω
输出电阻	Output impedance	350 ± 5 Ω
绝缘电阻	Insulation	≥2000MΩ / 100VDC
激励电压	Recommended excitation	10V
最大激励电压	Maximum excitation	15V
温度补偿范围	Compensated temp. range	-10 ~ 40°C
工作温度范围	Operation temp. range	-20 ~ 60°C
安全超载	Safe overload	150% F.S.
极限超载	Ultimate overload	200% F.S.
电缆线尺寸	Cable size	Ø3 × 450 mm
台面尺寸	Platform size	200 × 200 mm
防护等级	Protection class	IP65
连接方式	Cable color code	Input: Red(+) Black(-); Output: Green(+) White(-); 输入: 红 (+) 黑 (-); 输出: 绿 (+) 白 (-);



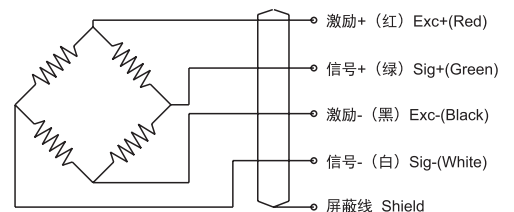
## 特点和用途 / Features & Applications

- 精度高, 抗偏载能力强
- 最小量程 0.3kg
- 铝合金材料, 表面氧化。
- 结构非常紧凑, 很轻, 外形轮廓低, 并且易于安装, IP65
- 适用于计价秤、计数秤、电子天平
- High accuracy, high side load tolerance
- The minimum capacity is 0.3kg
- Made of aluminum alloy, surface anodized
- Compact structure, very light, small size with profile, and easy to install, has the function of high stability, IP65
- Mainly used for pricing scales, counting scales, balance, ect

## 受力方式 / Load Direction



## 接线图 / Schematic Wiring Diagram



注: 屏蔽线不与弹性体相连。

Note: Cable shield is not connected to element.