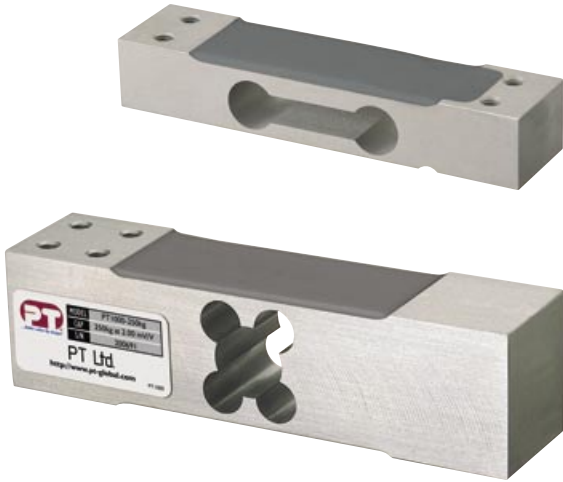


Model PT1000

LOW COST SINGLE POINT LOAD CELL



A direct bolt replacement for most industry standard single point cells.

The PT1000 is a dual designed model providing for increased capacities.

The smaller cell is from 3kg to 35kg and at only 22mm high and 130mm long it's perfect for small low cost retail scales, medical and check weighing applications with platforms up to 350mm x 350mm.

The larger size cell measures from 50kg to 250kg capacity and is ideal for platform sizes 400mm x 500mm.

This is a very compact cell for its capacity range.

Direct bolt industry standard makes both large and small PT1000's ready replacements for other less well-protected models. The PT1000 comes as standard with SURESEAL sealing and is protected to IP66.

APPLICATIONS

- Low cost retail scales
- Low cost bench and person weighers
- Hopper scales & net weighing scales

FEATURES

- Marine grade anodised finish
- Protected with **SURESEAL™**
- Dual design, increased capacities
- Generous platform sizes 350mm x 350mm up to 35kg
- Generous platform sizes 400mm x 500mm 50kg up to 250kg

Specifications

Note: All specifications are a maximum, as a % (\pm) of full load, unless otherwise stated.

Nominal Capacity	3kg ~ 250kg	Input Impedance	425 Ω \pm 15 Ω
Signal Output at Capacity	2mV/V \pm 10%	Output Impedance	350 Ω \pm 3 Ω
Linearity Error	< 0.020% FSO	Insulation Impedance	> 5000 M Ω at 100V DC
Non-Repeatability	< 0.010% FSO	Excitation Voltage (Recommended)	5 ~ 12V AC/DC
Combined Error	< 0.025% FSO	Excitation Voltage (Maximum)	15V AC/DC
Hysteresis	< 0.015% FSO	Eccentric Loading (effect/cm)	< 0.0085% FSO (3 ~ 35kg) < 0.0074% FSO (50 ~ 250kg)
Creep/Zero Return (30 mins)	< 0.030% / 0.020% FSO	Deflection at Rated Capacity	< 0.4mm
Zero Balanc	< 3.000% Capacity	Storage Temperature Range	-50 ~ 70°C
Temperature Effect on Span/10°C	< 0.010% FSO	Cable Type	4mm, Screened, PVC Sheath 4 Core x 0.09mm ² (28 AWG)
Temperature Effect on Zero/10°C	< 0.015% Capacity	Cable Length	0.5 Metre (3kg ~ 35kg) 1 Metre (50kg ~ 250kg)
Compensated Temperature Range	-10 ~ 40°C	Cable Length	0.5 Metre (3kg ~ 35kg) 1 Metre (50kg ~ 250kg)
Operating Temperature Range	-30 ~ 70°C	Material	Aluminium
Service Load	100% of Rated Capacity	Finish	Marine Anodised
Safe Load	150% of Rated Capacity		
Ultimate Load	300% of Rated Capacity		



Manufactured in New Zealand

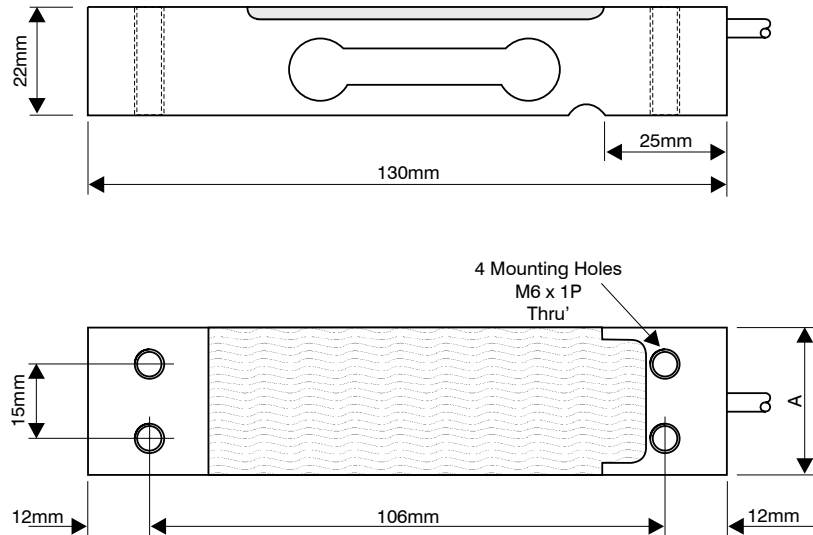
PT Limited®

<http://www.pt-global.com>

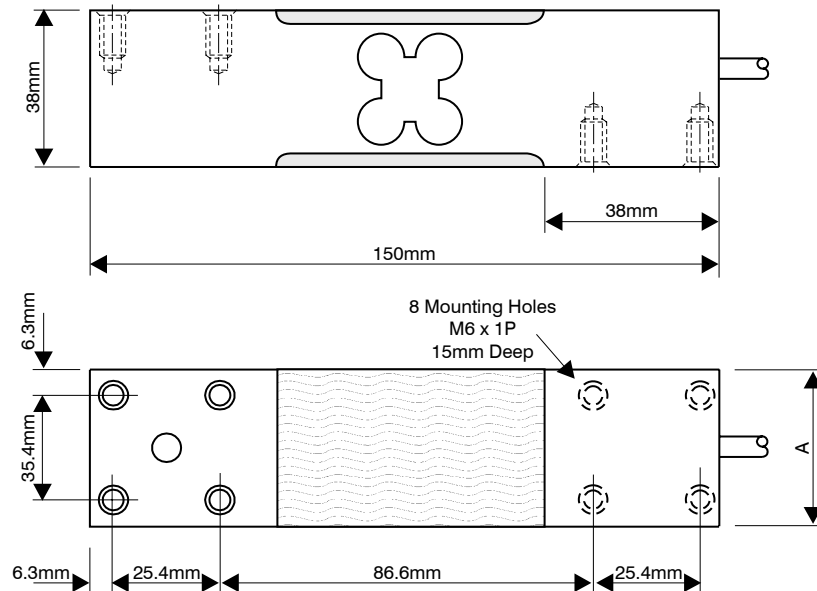
Ordering Information

MODEL	Part Number	MODEL	Part Number	CABLES PACKS	Part Number
PT1000-3kg	10M0003A000XXX	PT1000-50kg	10M0050A000XXX	Junction box to indicator runs. Available by the metre.	
PT1000-5kg	10M0005A000XXX	PT1000-100kg	10M0100A000XXX	10 Metres	A-4C3.6-0010
PT1000-7kg	10M0007A000XXX	PT1000-150kg	10M0150A000XXX	50 Metres	A-4C3.6-0050
PT1000-10kg	10M0010A000XXX	PT1000-200kg	10M0200A000XXX	100 Metres	A-4C3.6-0100
PT1000-15kg	10M0015A000XXX	PT1000-250kg	10M0250A000XXX	Cable Joint Kit	A-CAB-JOINTSTD
PT1000-20kg	10M0020A000XXX				
PT1000-30kg	10M0030A000XXX				
PT1000-35kg	10M0035A000XXX				

3kg ~ 35kg



50kg ~ 250kg



PT Cable Colour Code

Excitation	+ve	Red
Sense	+ve	Brown
Excitation	-ve	Black
Sense	-ve	Blue
Signal	+ve	Green
Signal	-ve	White

Load Cell Dimensions

	3kg ~ 7kg	10kg ~ 30kg	35kg	50kg ~ 250kg
A	25.4	30	38	38
Weight	0.15	0.2	0.25	0.55

Dimensions in mm Weight in kg