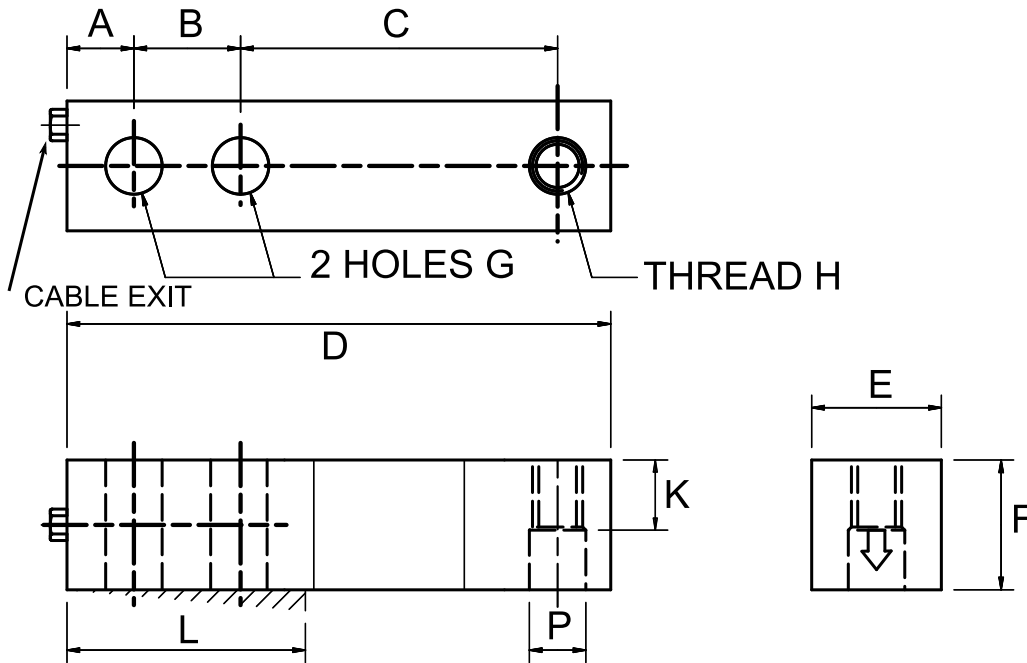




# PT LCSB Shear Beam Load Cell



## Dimensions in mm and kg

Capacity	Order	A	B	C	D	E	F	G	H	K	L	P	Cable	Weight
500kg	LSB0500T000XXX	15.8	25.4	76.2	130.0	31.8	31.8	13.5	M12 x 1.75P	16.0	57.2	13.5	4m PUR	0.9 each
1000kg	LSB1000T000XXX	15.8	25.4	76.2	130.0	31.8	31.8	13.5	M12 x 1.75P	16.0	57.2	13.5	4m PUR	0.9 each
1500kg	LSB1500T000XXX	15.8	25.4	76.2	130.0	31.8	31.8	13.5	M12 x 1.75P	16.0	57.2	13.5	4m PUR	0.9 each
2000kg	LSB2000T000XXX	15.8	25.4	76.2	130.0	31.8	31.8	13.5	M12 x 1.75P	16.0	57.2	13.5	4m PUR	0.9 each
2500kg	LSB2500T000XXX	19.1	38.1	95.3	171.5	38.1	38.1	20.5	M18 x 1.5P	19.0	76.2	19.8	6m PUR	1.9 each
3000kg	LSB3000T000XXX	19.1	38.1	95.3	171.5	38.1	38.1	20.5	M18 x 1.5P	19.0	76.2	19.8	6m PUR	1.9 each
5000kg	LSB5000T000XXX	19.1	38.1	95.3	171.5	38.1	38.1	20.5	M18 x 1.5P	19.0	76.2	19.8	6m PUR	1.9 each
10000kg	LSB010TT000XXX	25.4	50.8	120.7	222.3	50.8	50.8	26.9	M24 x 2.0P	25.4	101.6	26.0	6m PUR	4.4 each

## Specifications

Signal Output at Capacity.....3±0.25% mV/V  
 Linearity Error.....< 0.020% FSO  
 Non-Repeatability.....< 0.010% FSO  
 Combined Error.....< 0.030% FSO  
 Hysteresis.....< 0.030% FSO  
 Creep/(30 mins.).....< 0.030% FSO  
 Zero Balance.....< 1 % Capacity  
 Temperature Effect on Span(/10C).....< 0.02% FSO  
 Temperature Effect on Zero(/10C).....< 0.02% FSO  
 Operating Temperature Range.....-35 ~ +70 C  
 Storage Temperature Range.....-50 ~ +85 C  
 Compensated Temperature Range.....-10 ~ +40 C

Service Load.....100% Capacity  
 Safe Load.....150% Capacity  
 Safe Side Load.....100% Capacity  
 Ultimate Load.....300% Capacity  
 Input Resistance.....350Ω ± 3.5Ω  
 Output Resistance.....350Ω ± 3.5Ω  
 Insulation Resistance.....> 5000 MΩ (@50 VDC)  
 Excitation Voltage(Rec).....5~15 V AC/DC  
 Excitation Voltage(Max.).....18 V AC/DC  
 Cable.....4 core, screened, Dia. 5.0 mm  
 Material.....Alloy Tool Steel  
 Protection.....Nickel plating, IP67

Excitation +ve.....RED  
 Signal +ve.....GREEN

Excitation -ve.....BLACK  
 Signal -ve.....WHITE