

## TCLP-NB Tension/Compression Universal Load Cell

### 10kN ~2MN



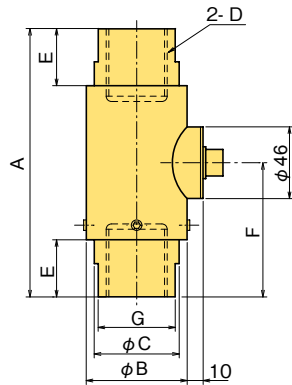
### General purpose Various capacities

The TCLP-NB Tension/Compression Universal Load Cell is a load cell widely used in applications such as measuring crane and jack loads because it offers excellent consistency.

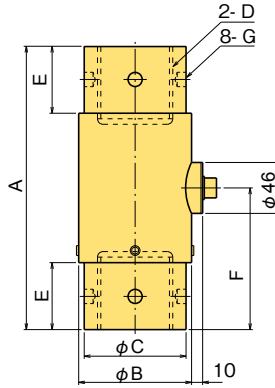
Two independent output type is available on request.

Protection ratings: IP65 equivalent

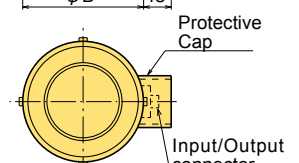
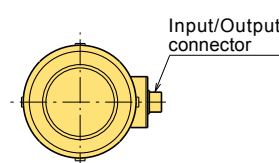
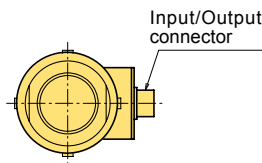
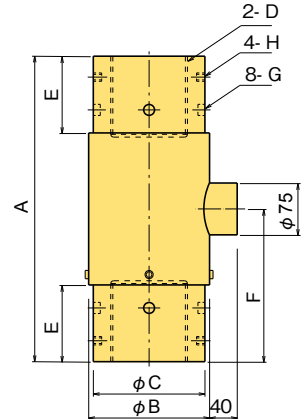
TCLP-10 ~ -200KNB



TCLP-300/-500KNB



TCLP-1 ~ -2MNB



### ■ Dimensions

TYPE	A	φB	φC	D	E	F	G	H
TCLP-10KNB	100	55	45	M12 x 1.75 DP15	15	53	36	-
TCLP-20KNB	110	60	50	M18 x 1.5 DP20	20	58	46	-
TCLP-30KNB	125	60	50	M24 x 2 DP30	20	64	46	-
TCLP-50KNB	125	60	50	M24 x 2 DP30	20	63	46	-
TCLP-100KNB	175	65	55	M39 x 2 DP45	37.5	87.5	50	-
TCLP-200KNB	255	80	70	M50 x 2 DP65	65	127.5	65	-
TCLP-300KNB	255	100	90	M65 x 3 DP65	60	127.5	φ 13 DP8	-
TCLP-500KNB	330	130	120	M85 x 3 DP85	80	165	φ 15 DP10	-
TCLP-1MNB	440	175	160	M110 x 3 DP110	108	220	φ 15 DP10	M12 DP12
TCLP-1.5MNB	530	215	200	M140 x 4 DP140	155	265	φ 20 DP10	M16 DP20
TCLP-2MNB	605	246	230	M160 x 4 DP160	194	302.5	φ 20 DP10	M20 DP25

### ■ Fitting accessory

TYPE	Spherical Cap FA	Rotary attachment FD	Rod End FE	Eye Bolt FF	Load Button FG	Shackle FH
TCLP-10KNB	FA-60	FD-1A	FE-1A	FF-1	FG-1	FH-1B
TCLP-20KNB	FA-80	FD-2A	FE-2A	FF-2	FG-2	FH-2B
TCLP-30/-50KNB	FA-100	FD-5	FE-5A	FF-5	FG-5	FH-5B
TCLP-100KNB	FA-140	FD-10	FE-10A	FF-10	FG-10	FH-10B
TCLP-200KNB	FA-140	FD-20	FE-20A	FF-20B	FG-20	FH-20B

### ■ SPECIFICATIONS

TYPE	TCLP-10KNB	TCLP-20KNB	TCLP-30KNB	TCLP-50KNB	TCLP-100KNB	TCLP-200KNB	TCLP-300KNB	TCLP-500KNB	TCLP-1MNB	TCLP-1.5MNB	TCLP-2MNB
Capacity	10kN	20kN	30kN	50kN	100kN	200kN	300kN	500kN	1MN	1.5MN	2MN
Rated Output	1mV/V(2000×10 <sup>-6</sup> strain) ±0.5%										
Non-linearity	0.1%RO										0.3%RO
Hysteresis	0.1%RO										0.3%RO
Natural frequency	6.8kHz	7.9kHz	8.3kHz	10kHz	10kHz	7.7kHz	6.7kHz	5.3kHz	4kHz	3.1kHz	2.6kHz
Temperature effect on zero	0.01%RO/°C										
Temperature effect on span	0.005%/°C										
Compensated temperature range	-10 ~ +60°C										
Allowable temperature range	-20 ~ +70°C										
Over load	200%										
Input/Output resistance	350Ω±1%										
Recommended exciting voltage	Less than 10V										
Allowable exciting voltage	20V										
Zero balance	5%RO										
Weight	1.5kg	1.5kg	2kg	2kg	2.5kg	5kg	8kg	15kg	50kg	85kg	110kg

Supplied cable : CT9-4N10/WP-STB (φ9mm 0.5mm<sup>2</sup> 4-core shielded chloroprene cable 10m)