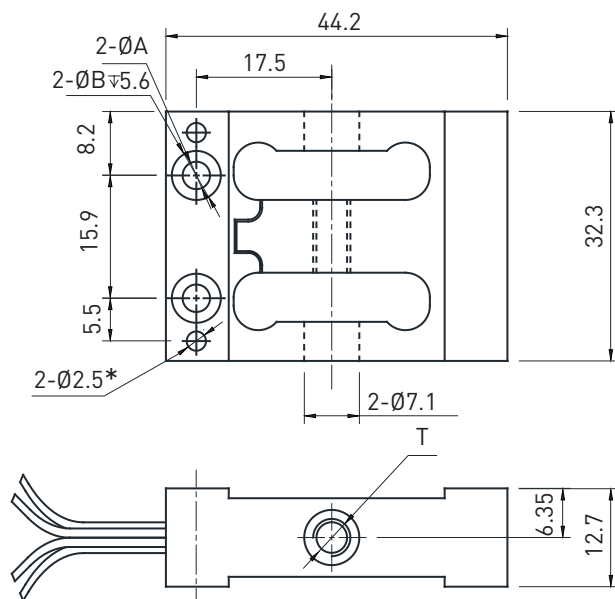


## 尺寸及量程 / Size and Capacity

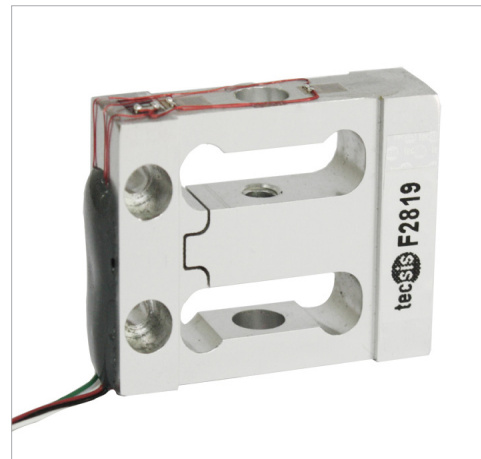


\*: 此处的过载保护孔用于 ≥200lbs 的传感器的过载保护。  
 \*: Additional pin holes as shown must be used for safe Overload ≥200lbs.

量程 / Capacity (lbs)	T	A	B	材料 / Material	重量 / Weight
2.2/5/10/25/50/100	10-32UNF-2B	3.6	6.4	铝合金 / Aluminum alloy	0.03kg
200	10-32UNF-2B	3.6	6.4	不锈钢 / Stainless steel	
500	1/4-28UNF-2B	5.3	8.6		

## 技术参数 / Technical Parameters

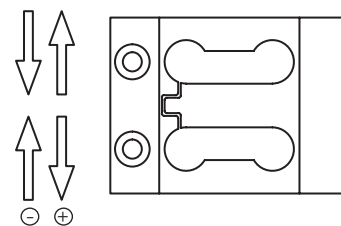
参数	Specifications	技术指标 / Technique
输出灵敏度	Rated output	2.0 ± 10% mV / V
零点输出	Zero balance	± 3% F.S.
非线性	Non-linearity	0.02% F.S. (≤100lbs) 0.06% F.S. (≥200lbs)
滞后	Hysteresis	0.02% F.S. (≤100lbs) 0.06% F.S. (≥200lbs)
重复性	Repeatability	0.02% F.S.
温度灵敏度漂移	Temp. effect on output	0.05% F.S. / 10°C
零点温度漂移	Temp. effect on zero	0.05% F.S. / 10°C
输入电阻	Input impedance	1000 ± 20 Ω
输出电阻	Output impedance	1000 ± 10 Ω
激励电压	Recommended excitation	10V
最大激励电压	Maximum excitation	18V
温度补偿范围	Compensated temp. range	-10 ~ 60°C
工作温度范围	Operation temp. range	-20 ~ 80°C
安全超载	Safe overload	250lbs (≤100lbs) 200% F.S. (≥200lbs)
电缆线尺寸	Cable size	300 mm ( 4-lead wires )
防护等级	Protection class	IP65
连接方式	Cable color code	Input: Green(+) Black(-); Output: White(+) Red(-); 输入: 绿 (+) 黑 (-); 输出: 白 (+) 红 (-);



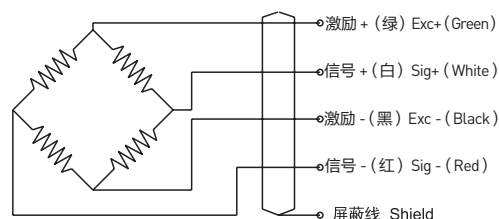
## 特点和用途 / Features & Applications

- 铝合金或不锈钢材料
- 拉压双向, IP65
- 带过载保护
- 主要用于推拉力计, 料斗秤, 工业测量系统
- Made of aluminum alloy or stainless steel
- Tension and compression application, IP65 protection
- Integrated overload protection
- Mainly used for pull and push dynamometer, hopper scales and industrial measuring systems

## 受力方式 / Load Direction



## 接线图 / Schematic Wiring Diagram



注: 屏蔽线不与弹性体相连。  
 Note: Cable shield is not connected to element.