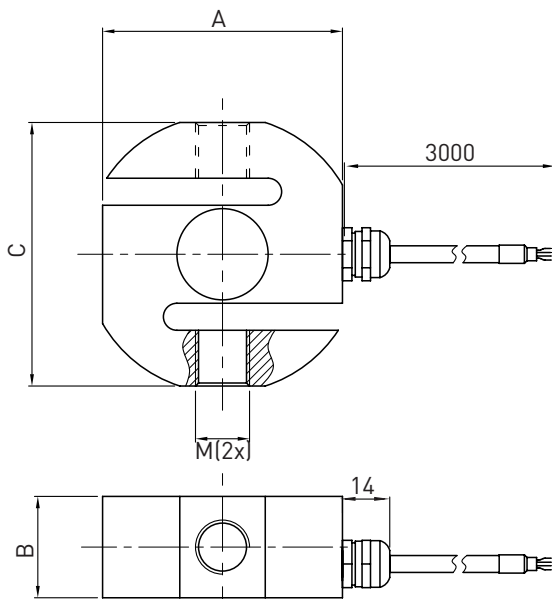


尺寸及量程 / Size and Capacity



CAP (kg)	SIZE(mm)	A	B	C	M	材料/Material	重量/Weight
50/100/150/200/300/500		52.5	22	59.5	M12	合金钢/ Alloy steel	0.65kg
1000/1500/2000/2500		71	30	78.0	M16*2	不锈钢 (可选) / Stainless steel (Option)	1.5kg
3000/5000		91	45	90.0	M24*2		2.9kg
7500		163	50	163	M30*2		10.8kg

技术参数 / Technical Parameters

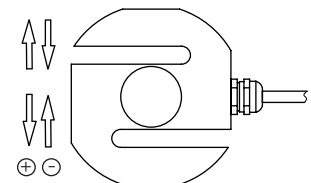
参数	Specifications	技术指标/Technique
输出灵敏度	Rated output	2.0 ± 5% mV / V
零点输出	Zero balance	± 2% F.S.
非线性	Non-linearity	0.03% F.S.
滞后	Hysteresis	0.03% F.S.
重复性	Repeatability	0.03% F.S.
蠕变 (30分钟)	Creep (30min)	0.05% F.S.
温度灵敏度漂移	Temp. effect on output	0.025% F.S. / 10°C
零点温度漂移	Temp. effect on zero	0.025% F.S. / 10°C
输入电阻	Input impedance	385 ± 10Ω
输出电阻	Output impedance	350 ± 5Ω
绝缘电阻	Insulation	≥5000MΩ / 100VDC
激励电压	Recommended excitation	10V
最大激励电压	Maximum excitation	15V
温度补偿范围	Compensated temp. range	-10 ~ 60°C
工作温度范围	Operation temp. range	-20 ~ 80°C
安全超载	Safe overload	150% F.S.
极限超载	Ultimate overload	200% F.S.
电缆线尺寸	Cable size	∅5 × 3000 mm
防护等级	Protection class	IP65 (≤500kg), IP67 (>500kg)
连接方式	Cable color code	Input: Red(+) Black(-); Output: Green(+) White(-); 输入: 红 (+) 黑 (-); 输出: 绿 (+) 白 (-);



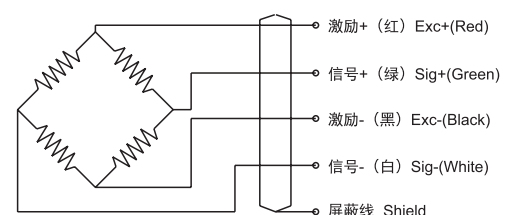
特点和用途 / Features & Applications

- 合金钢或不锈钢材料
- 拉压双向
- 输出对称性好，结构紧凑，安装方便
- 用于制造机电结合秤、吊钩秤、料斗秤、包装秤，分拣秤及各种专用秤、工业测量系统
- Made of alloy steel or stainless steel
- Tension and compression application
- Compact structure, easy to install
- Used in mechanical and electrical integration scales, crane scales, hopper scales, packaging scales, catch weigher and various special application scales and industrial measurement systems

受力方式 / Load Direction



接线图 / Schematic Wiring Diagram



注：屏蔽线不与弹性体相连。

Note: Cable shield is not connected to element.