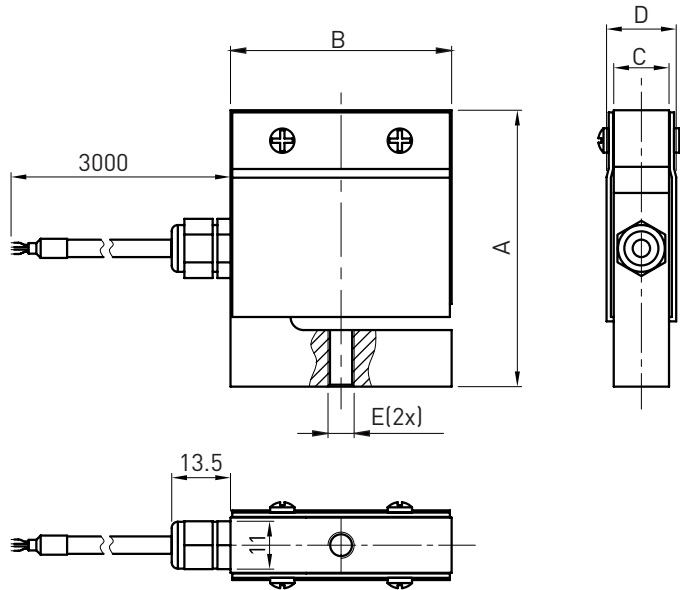


拉压双向结构传感器

尺寸及量程 / Size and Capacity



注：30kg 可做 M8
Note: M8 is optional available for 30kg

SIZE(mm) CAP (kg)	A	B	C	D	E	电缆线/Cable	材料 / Material	重量/Weight
5/6/10/15/20	63.5	50.8	12.7	17.0	M6*1	Ø4	铝合金	0.3kg
30/50/100/200	76.2	50.8	19.0	23.0	M12*1.75	Ø5	Aluminum alloy	0.4kg

技术参数 / Technical Parameters

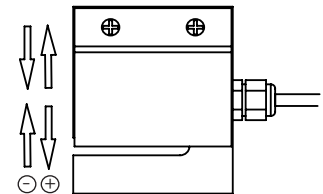
参数	Specifications	技术指标/Technique
输出灵敏度	Rated output	2.0 ± 5% mV / V
零点输出	Zero balance	± 2% F.S.
非线性	Non-linearity	0.03% F.S.
滞后	Hysteresis	0.03% F.S.
重复性	Repeatability	0.03% F.S.
蠕变 (30分钟)	Creep (30min)	0.03% F.S.
温度灵敏度漂移	Temp. effect on output	0.03% F.S. / 10°C
零点温度漂移	Temp. effect on zero	0.03% F.S. / 10°C
输入电阻	Input impedance	410 ± 30 Ω
输出电阻	Output impedance	350 ± 5 Ω
绝缘电阻	Insulation	≥5000M Ω / 100VDC
激励电压	Recommended excitation	10V
最大激励电压	Maximum excitation	15V
温度补偿范围	Compensated temp. range	-10~60°C
工作温度范围	Operation temp. range	-20~80°C
安全超载	Safe overload	120% F.S.
极限超载	Ultimate overload	150% F.S.
电缆线尺寸	Cable size	3000 mm
防护等级	Protection class	IP65
连接方式	Cable color code	Input: Red(+) Black(-); Output: Green(+) White(-); 输入: 红 (+) 黑 (-); 输出: 绿 (+) 白 (-);



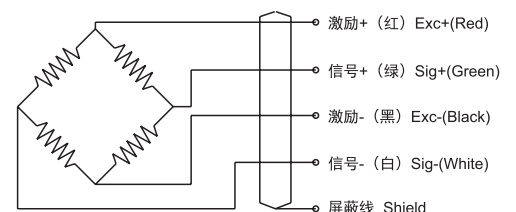
特点和用途 / Features & Applications

- 铝合金材料
- 拉压双向, IP65
- 用于小力值试验机、料斗秤、配料秤、吊钩秤、插拔力测试
- Made of aluminum alloy
- Tension and compression application, IP65 protection
- Mainly used for small range of testing instruments, tension and compression testing instruments, hopper scales, batching scales, crane scales

受力方式 / Load Direction



接线图 / Schematic Wiring Diagram



注：屏蔽线不与弹性体相连。
Note: Cable shield is not connected to element.