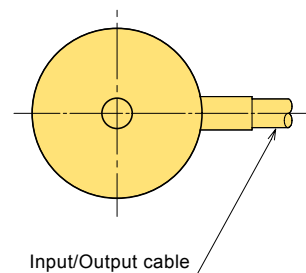
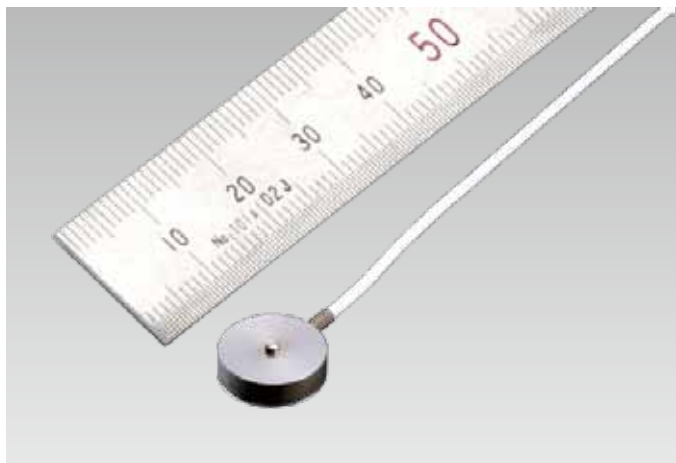
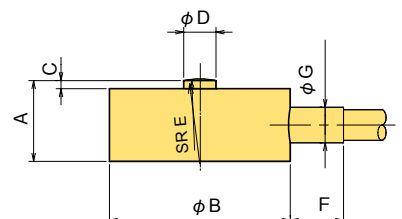


CLS-NA/CLS-NB Compression Load Cell

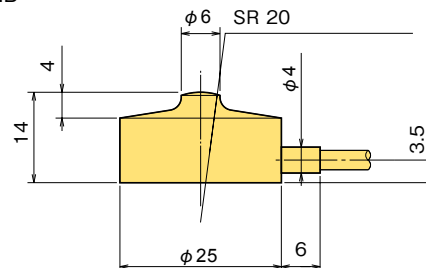
2N~10kN



CLS-2NA~5KNB



CLS-10KNB



The CLS-NA and CLS-NB Load Cells are ultracompact load cells with capacities ranging from 10N to 10kN. They are widely used for measuring load distribution or loads in structural mockup testing and as a sensor for industrial machinery.

Protection ratings: IP53 equivalent

Ultracompact
Light weight

■ Dimensions

| TYPE | A | ϕB | C | ϕD | E | F | ϕG |
|-----------|-------------------|----------|-----|----------|----|---|----------|
| CLS-2NA | 4 | 12 | 0.7 | 1.5 | 2 | 4 | 1.8 |
| CLS-5NA | 4 | 12 | 0.7 | 1.5 | 2 | 4 | 1.8 |
| CLS-10NA | 4 | 12 | 0.7 | 1.5 | 2 | 4 | 1.8 |
| CLS-20NA | 4 | 12 | 0.7 | 1.5 | 2 | 4 | 1.8 |
| CLS-50NA | 4 | 12 | 0.7 | 1.5 | 2 | 4 | 1.8 |
| CLS-100NA | 4 | 12 | 0.7 | 1.5 | 2 | 4 | 1.8 |
| CLS-200NB | 9 | 20 | 1 | 2.5 | 8 | 6 | 4 |
| CLS-500NB | 9 | 20 | 1 | 2.5 | 8 | 6 | 4 |
| CLS-1KNB | 9 | 20 | 1 | 2.5 | 8 | 6 | 4 |
| CLS-2KNB | 10 | 20 | 1.5 | 3 | 8 | 6 | 4 |
| CLS-5KNB | 12.5 | 25 | 2 | 4 | 10 | 6 | 4 |
| CLS-10KNB | As per the figure | | | | | | |

■ SPECIFICATIONS

| TYPE | CLS-2NA | CLS-5NA | CLS-10NA | CLS-20NA | CLS-50NA | CLS-100NA | CLS-200NB | CLS-500NB | CLS-1KNB | CLS-2KNB | CLS-5KNB | CLS-10KNB |
|-------------------------------|---|---------|-----------|----------|----------|-----------|---|-----------|----------|----------|----------|-----------|
| Capacity | 2N | 5N | 10N | 20N | 50N | 100N | 200N | 500N | 1kN | 2kN | 5kN | 10kN |
| Rated Output | 1mV/V (2000×10 ⁻⁶ strain) ±20% | | | | | | 1.5mV/V (3000×10 ⁻⁶ strain) ±10% | | | | | |
| Non-linearity | 1%RO | | 0.5%RO | | | | | | | | | |
| Hysteresis | 1%RO | | 0.5%RO | | | | | | | | | |
| Natural frequency | 10kHz | 20kHz | 16kHz | 30kHz | 40kHz | 50kHz | 40kHz | 50kHz | 50kHz | 60kHz | 50kHz | 40kHz |
| Temperature effect on zero | 0.2%RO/°C | | 0.1%RO/°C | | | | | | | | | |
| Temperature effect on span | 0.05%/°C | | | | | | | | | | | |
| Compensated temperature range | -10 ~ +60°C | | | | | | | | | | | |
| Allowable temperature range | -10 ~ +60°C | | | | | | | | | | | |
| Over load | 150% | | | | | | | | | | | |
| Ultimate overload rating | 300% | | 500% | | | | 300% | | | | | |
| Input/Output resistance | 350Ω±2% | | | | | | 350Ω±1% | | | | | |
| Recommended exciting voltage | Less than 2V | | | | | | | | | | | |
| Allowable exciting voltage | 5V | | | | | | | | | | | |
| Zero balance | 200%RO | | 150%RO | | | | 100%RO | | | | | |
| Weight | 1g | 1g | 3g | 3g | 3g | 3g | 12g | 12g | 12g | 12g | 40g | 40g |

Input/Output cable : CLS-NA ϕ 1.3mm 0.03mm² 4-core shielded vinyl cable 2m
CLS-NB ϕ 3mm 0.05mm² 4-core shielded chloroprene cable 2m