

# DISPLACEMENT TRANSDUCERS

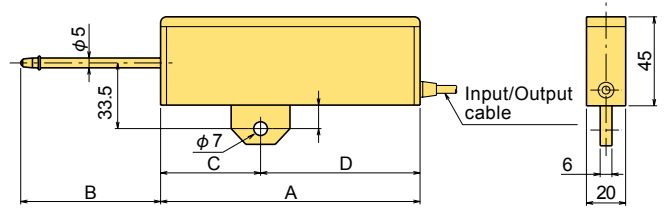
## SDP-C Displacement Transducer 50/100mm



The SDP-C displacement transducer is a general-purpose, strain gauge type transducer. Designed with a strain-generating cantilever, it is able to make stable measurement while maintaining the high sensitivity to minuscule displacements.

Protection ratings: IP40 equivalent

### General purpose



### ■ Dimensions

TYPE	A	B	C	D
SDP-50C	130	70	50	80
SDP-100C	220	120	90	130

### ■ SPECIFICATIONS

TYPE	SDP-50C	SDP-100C
Capacity	50mm	100mm
Rated Output	2.5mV/V(5000×10 <sup>-6</sup> strain) ±0.2%	
Sensitivity(x10 <sup>-6</sup> strain)/mm	100	50
Non-linearity	0.2%RO	
Spring force	5.9N	
Frequency response	1Hz	
Allowable temperature range	0 ~ +60°C (no condensation)	
Input/Output resistance	350Ω	
Recommended exciting voltage	Less than 2V	
Allowable exciting voltage	5V	
Weight	250g	350g

Supplied cable :

CT6-4V10/NJ-STB (φ6mm 0.3mm<sup>2</sup> 4-core shielded vinyl cable 10m)

## SDP-CT Displacement Transducer 50/100mm

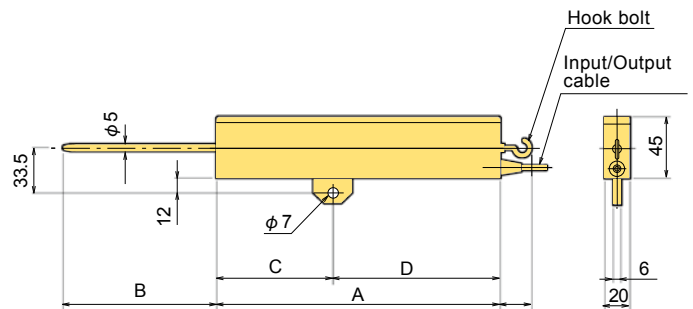


The SDP-CT displacement transducer is a general-purpose, strain gauge type transducer, and features measurement of tension displacement using hook bolt. Designed with a strain-generating cantilever, it is able to make stable measurement while maintaining the high sensitivity to minuscule displacements.

Protection ratings: IP40 equivalent

### Wire tension

### General purpose



### ■ Dimensions

TYPE	A	B	C	D
SDP-50CT	130	70	50	80
SDP-100CT	220	120	90	130

### ■ SPECIFICATIONS

TYPE	SDP-50CT	SDP-100CT
Capacity	50mm	100mm
Rated Output	2.5mV/V(5000×10 <sup>-6</sup> strain) ±0.2%	
Sensitivity(x10 <sup>-6</sup> strain)/mm	100	50
Non-linearity	0.2%RO	
Frequency response	6N	
Natural frequency	1Hz	
Allowable temperature range	0 ~ +60°C (no condensation)	
Input/Output resistance	350Ω	
Recommended exciting voltage	Less than 2V	
Allowable exciting voltage	5V	
Weight	250g	350g

Supplied cable :

CT6-4V10/NJ-STB (φ6mm 0.3mm<sup>2</sup> 4-core shielded vinyl cable 10m)