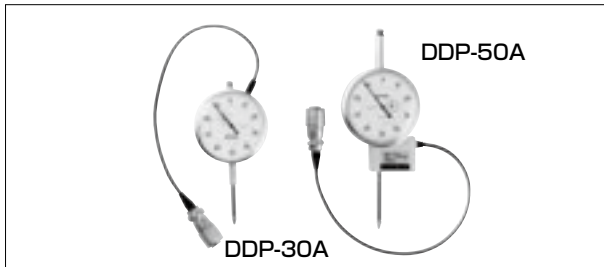


# DISPLACEMENT TRANSDUCERS

## DDP-A Displacement Transducer

10~50mm



The DDP-A displacement transducer is a dial gauge with a strain sensing element and a bridge circuit integrated. The amount of displacement can be checked by viewing the pointer while the output from the sensing element can be used to control a recorder or a machine.

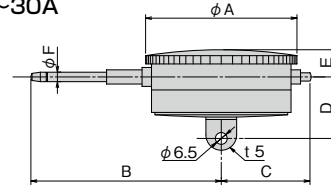
Protection ratings : IP 40 equivalent

### Specifications

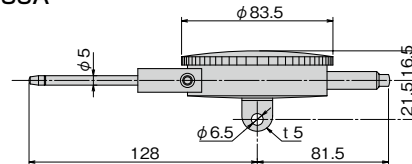
Type	DDP-10A	DDP-20A	DDP-30A	DDP-50A
Capacity	10mm	20mm	30mm	50mm
Rated Output	1.5mV/V $\pm$ 0.3% (3000 $\times$ 10 <sup>-6</sup> strain $\pm$ 0.3%)			2.5mV/V $\pm$ 0.3% (5000 $\times$ 10 <sup>-6</sup> strain $\pm$ 0.3%)
Sensitivity	300 $\times$ 10 <sup>-6</sup> strain/mm	150 $\times$ 10 <sup>-6</sup> strain/mm	100 $\times$ 10 <sup>-6</sup> strain/mm	
Non-linearity	0.3%RO			
Spring force	2.9N	3.9N		5.4N
Frequency response	2Hz		1Hz	
Temperature range	0~+60°C			
Input/output resistance	350 $\Omega$			
Recommended exciting voltage	Less than 2V			
Allowable exciting voltage	5V			
Weight	190g	340g	400g	500g

Supplied cable : CT6-4V10/NJ-STB ( $\phi$ 6mm 0.3mm<sup>2</sup> 4-core shielded vinyl cable 10m)

DDP-10~30A



DDP-50A

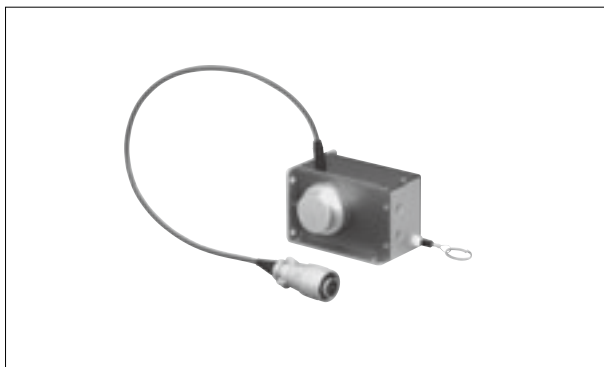


### Dimensions

Type	A	B	C	D	E	F
DDP-10A	53	65	40.5	33	14.5	4
DDP-20A	66.5	90	41	33	14.5	5
DDP-30A	76	102	46	33	15	5
DDP-50A	As per the figure					

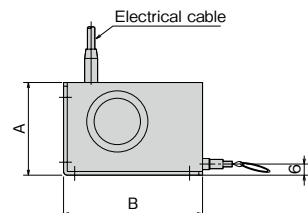
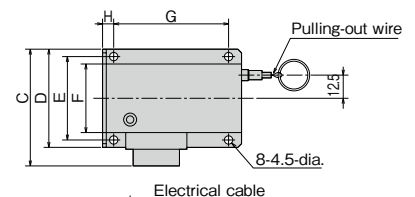
## DP-E Displacement Transducer

500~2000mm



The DP-E displacement transducer is used to measure a large amount of displacement. A stainless steel wire is drawn to measure displacement. The wire tension is constant in the same direction regardless of the amount of displacement. This is a small, lightweight, and high-accuracy transducer.

Protection ratings : IP 40 equivalent



### Specifications

Type	DP-500E	DP-1000E	DP-2000E
Capacity	500mm	1000mm	2000mm
Rated Output	5mV/V (10000 $\times$ 10 <sup>-6</sup> strain) $\pm$ 0.3%		
Sensitivity	20 $\times$ 10 <sup>-6</sup> strain/mm	10 $\times$ 10 <sup>-6</sup> strain/mm	5 $\times$ 10 <sup>-6</sup> strain/mm
Non-linearity	0.3%RO		
Spring force	1.5N		1.7N
Temperature range	-10~+80°C (no condensation)		
Input/output resistance	Input 206 $\Omega$ Output 350 $\Omega$		
Recommended exciting voltage	Less than 2V		
Allowable exciting voltage	10V		
Weight	210g		400g

Supplied cable : CT6-4V10/NJ-STB ( $\phi$ 6mm 0.3mm<sup>2</sup> 4-core shielded vinyl cable 10m)

### Dimensions

Type	A	B	C	D	E	F	G	H
DP-500E	50	75	63	53	45	37	62	6
DP-1000E	50	75	63	53	45	37	62	6
DP-2000E	80	98	66	57	49	41	74	16