

# DASH4PRO - Compact and Configurable Data Displays

- Updated for 2019 -



**DASH4PRO LCD**

The DASH4PRO is a fully configurable display unit which has been designed to be used either as a flexible standalone CAN display, or as a tightly integrated display for Race Technology CATS (Complete Automotive Testing System) and SPEEDBOX systems.

The display is very compact, and can be permanently fitted, or simply mounted using a windscreen suction mount in the vehicle. It is available with 2 screen technologies, either OLED or LCD depending on the application.



Configuring SPEEDBOX triggered tests using the DASH4PRO display

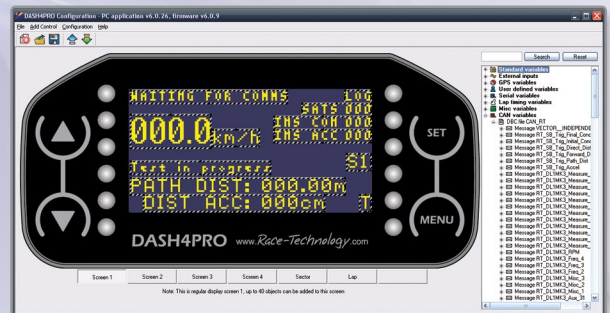


Secure temporary mounting with suction mounting kit



**DASH4PRO OLED**

When used as a standalone CAN display the DASH4PRO can be quickly configured to display any combination of data from an industry standard DBC file. The data can be displayed over 5 screens, in different sized fonts, or displayed on barcharts or graphs. There are also more advanced options like maths channels, alarms, and the ability to output CAN commands.



Configuration software with DBC file loading and fully configurable display layouts

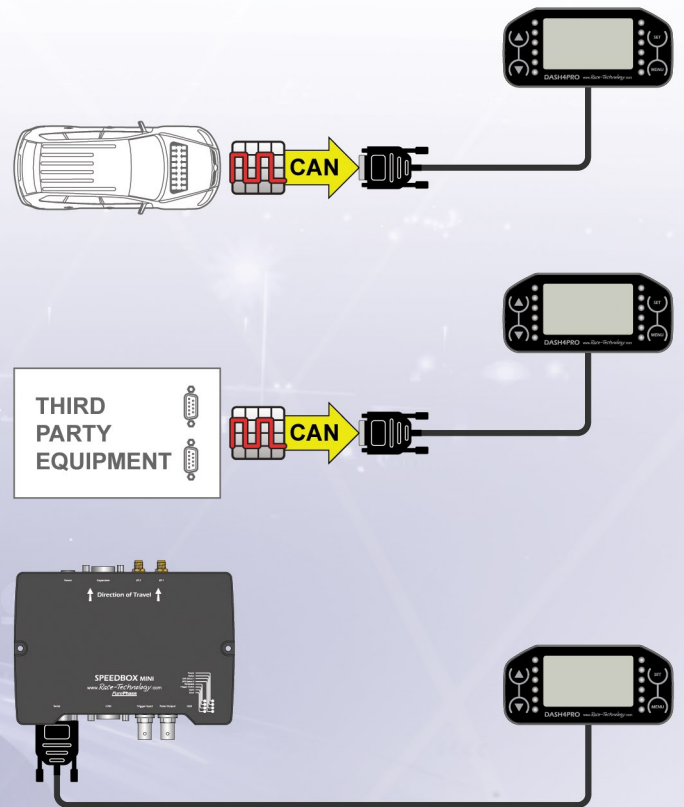
When used with Race Technology's CATS, it forms a user friendly and integrated solution capable of both displaying data, as well as controlling the CATS. The DASH4PRO can be used to display simple variables, the results from tests, configure of triggered tests, display of information messages and control of logging. The DASH4PRO can also be configured for alarms, so the user gets a warning if any variables go out of bounds, and has 2 sets of high brightness LEDs that can be configured for a number of different applications. The DASH4PRO is supplied with standard configuration for use with CATS meaning in most cases it can just be plugged in and used immediately.

**New for 2019** - Support for new ADAS end-of-line testing and validation modes.

# DASH4PRO - Compact and Configurable Data Displays

The CAN option includes **built in CAN tools** for displaying incoming CAN messages, perfect for troubleshooting, development and reverse engineering.

- **New for 2019** - Full DBC support including all multiplexing modes, comments and J1939
- Display all variables at 20, 50, 100, 125, 160, 250, 500 kbps or 1000 (1Mbit) baud rates, displays all raw CAN at selected baud rate. This enables data baud rates to be quickly checked, and individual messages scrolled through.
- Check incoming addresses, frequency and see raw data values live.
- Display all raw CAN variables at the unit's configured baud rate, to quickly check the configuration, frequency, all incoming raw CAN addresses and their values.



Race Technology Ltd (UK)

16 King Street, Eastwood, Nottingham, NG16 3DA

Tel: +44 (0)1773 537620

Fax: +44 (0)1773 537621

Email: [sales@race-technology.com](mailto:sales@race-technology.com)

